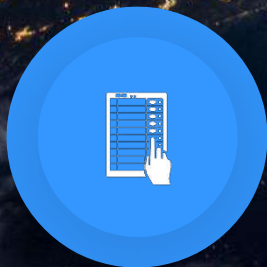
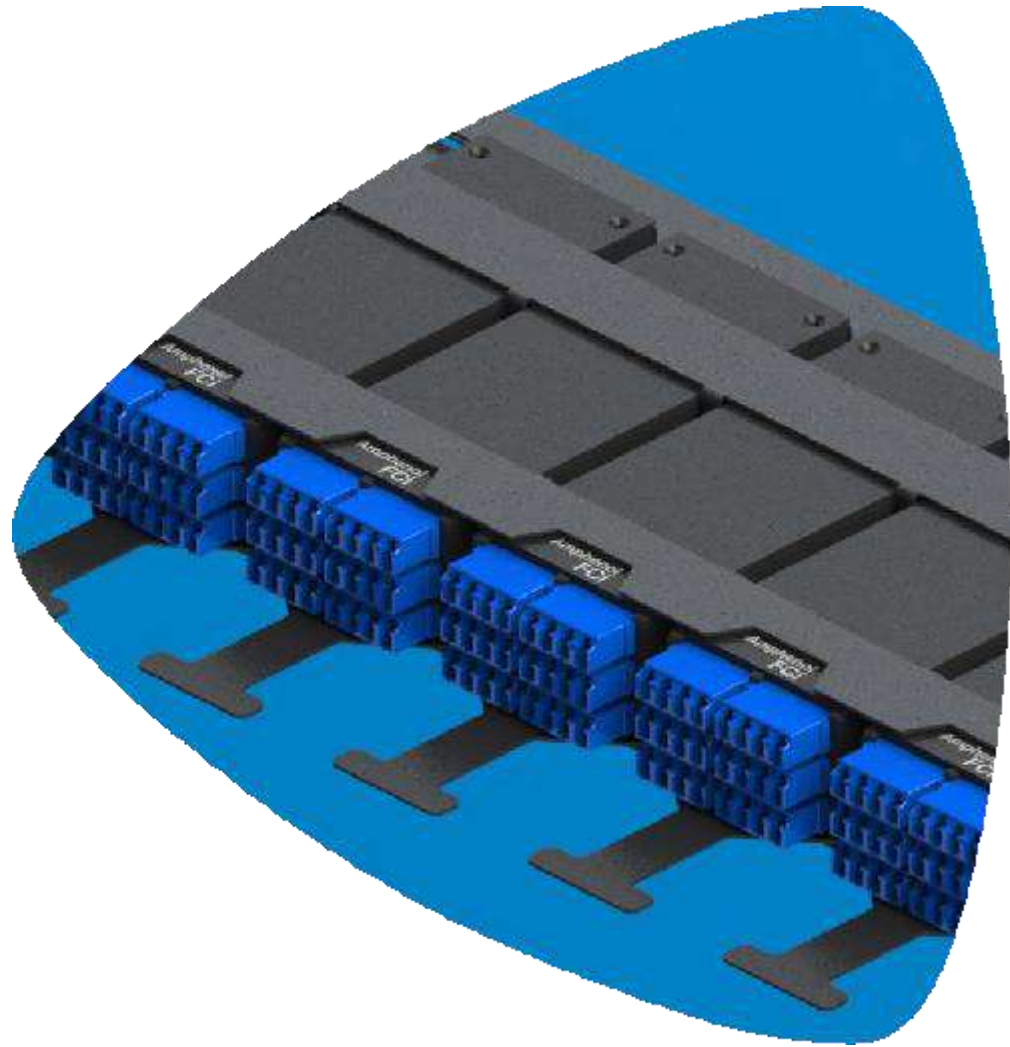


**PRODUCTS &
CUSTOMISED SOLUTIONS**



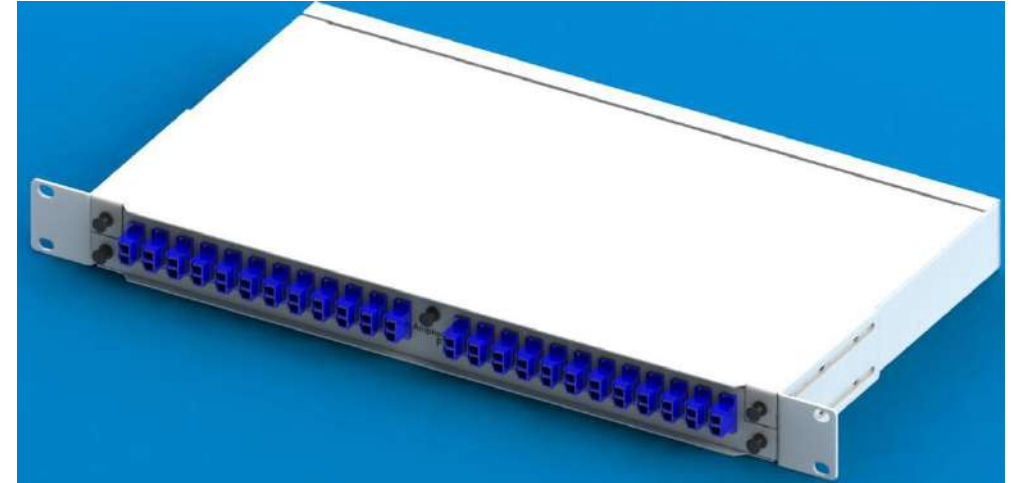
Connecting **People**
& **Technology**





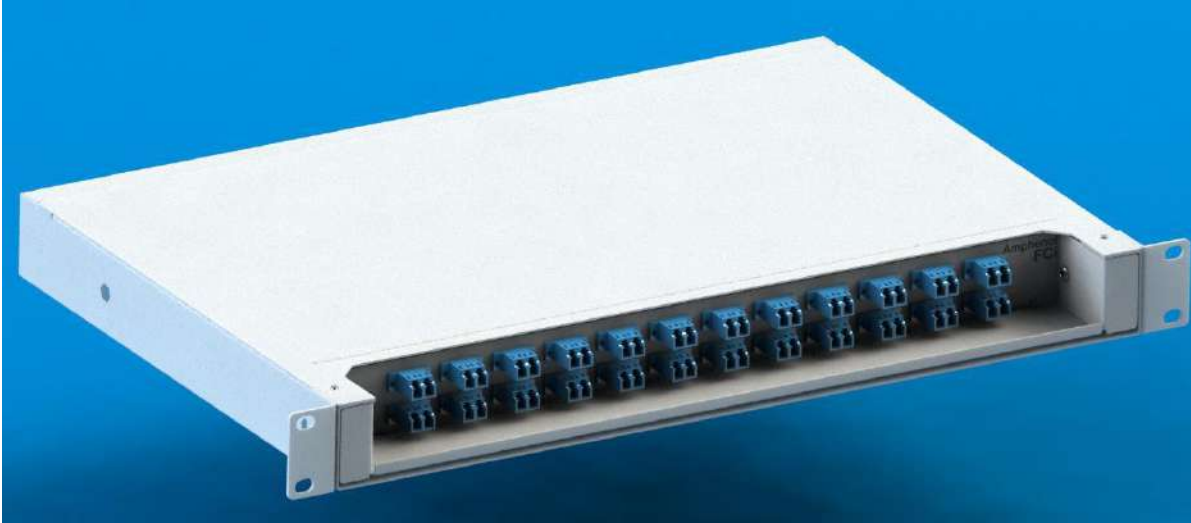
RACK MOUNT SOLUTIONS

RACK MOUNT SOLUTIONS_FIXED PANELS

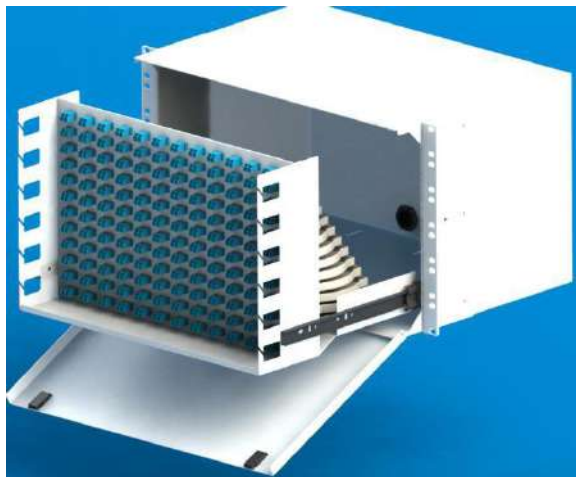


- RACK MOUNT-FIXED PANELS
- TERMINATION/SPLITTER
- SIZE: 1U~6U

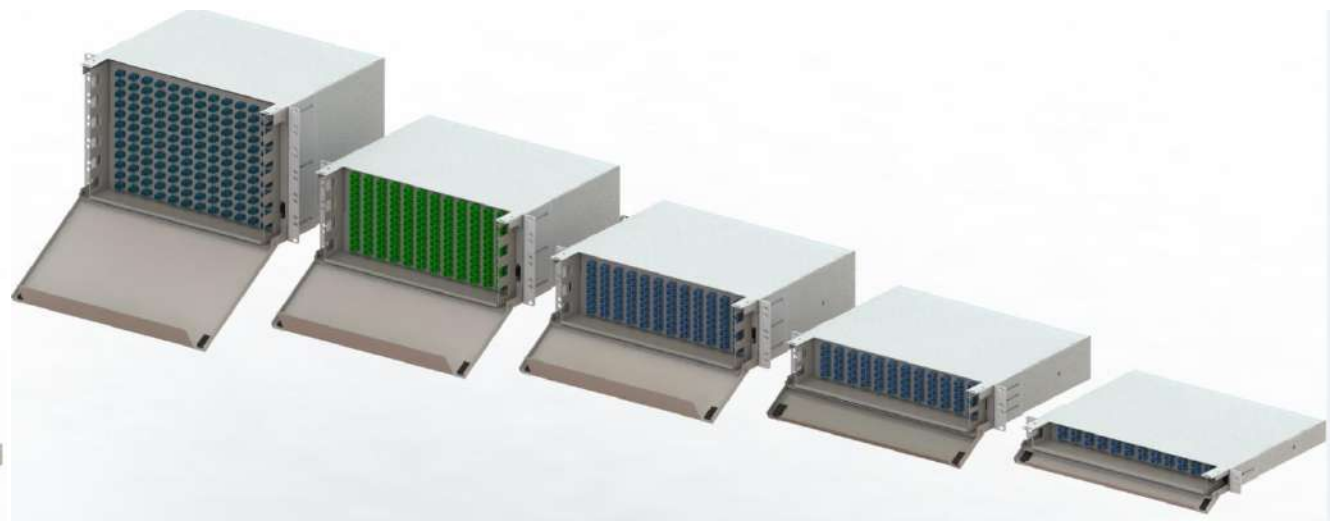
RACK MOUNT SOLUTIONS_SLIDING PANEL



- RACK MOUNT
- TERMINATION/SPLITTER PANEL
- TYPE: FIXED
- SIZE: 1U~6U



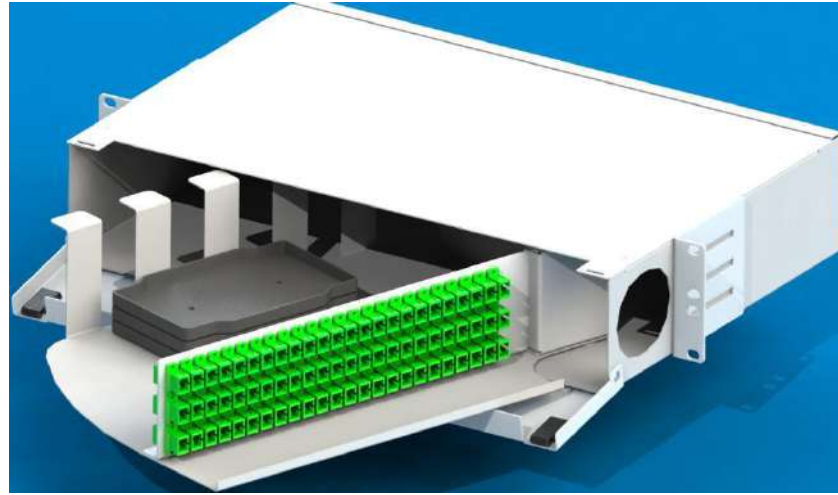
- RACK MOUNT-SLIDING PANELS
- TERMINATION
- SIZE: 1U~6U





- RACK MOUNT-SLIDING PANELS
- TERMINATION
- SIZE: 1U~6U

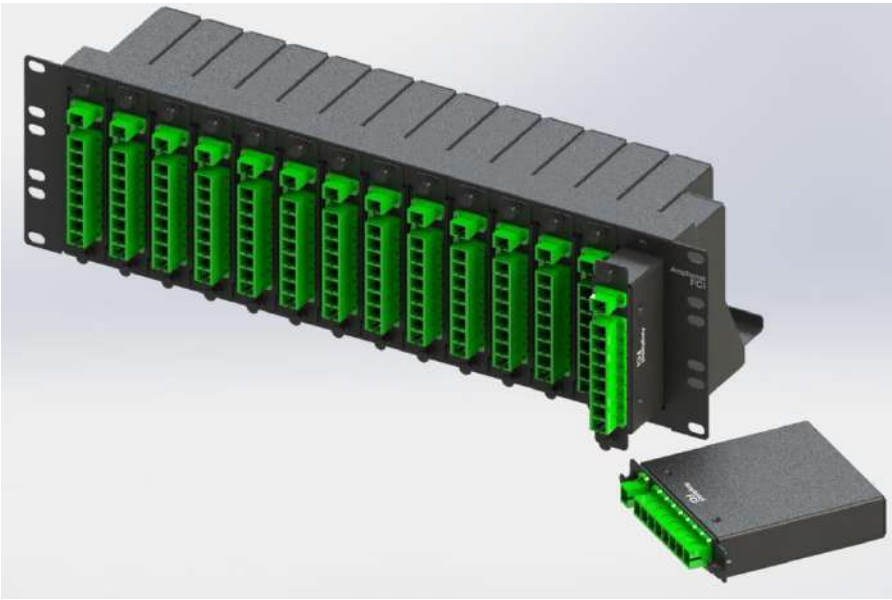




- RACK MOUNT-SWING PANELS
- TERMINATION
- SIZE: 1U~6U

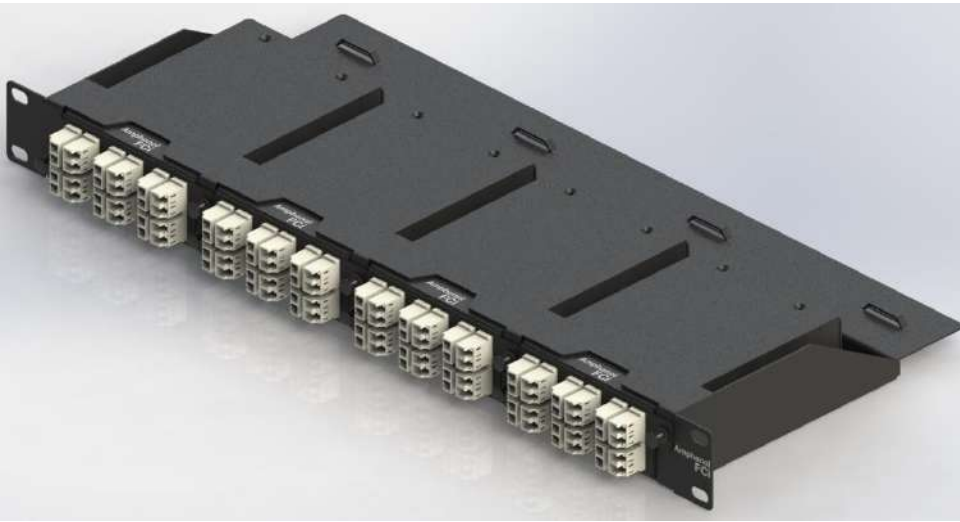


- RACK MOUNT-MODULAR PANELS
- TERMINATION
- SIZE: 3U~6U



- RACK MOUNT-CASSETTE TYPE PANELS
- TERMINATION/SPLITTER
- SIZE: 1U~4U

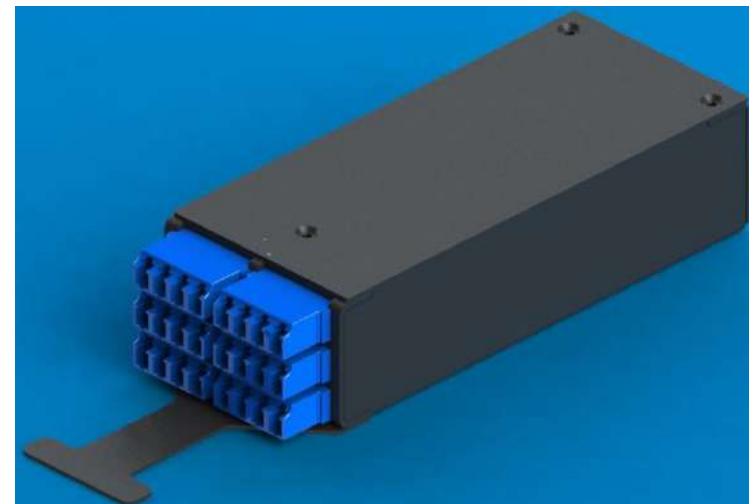
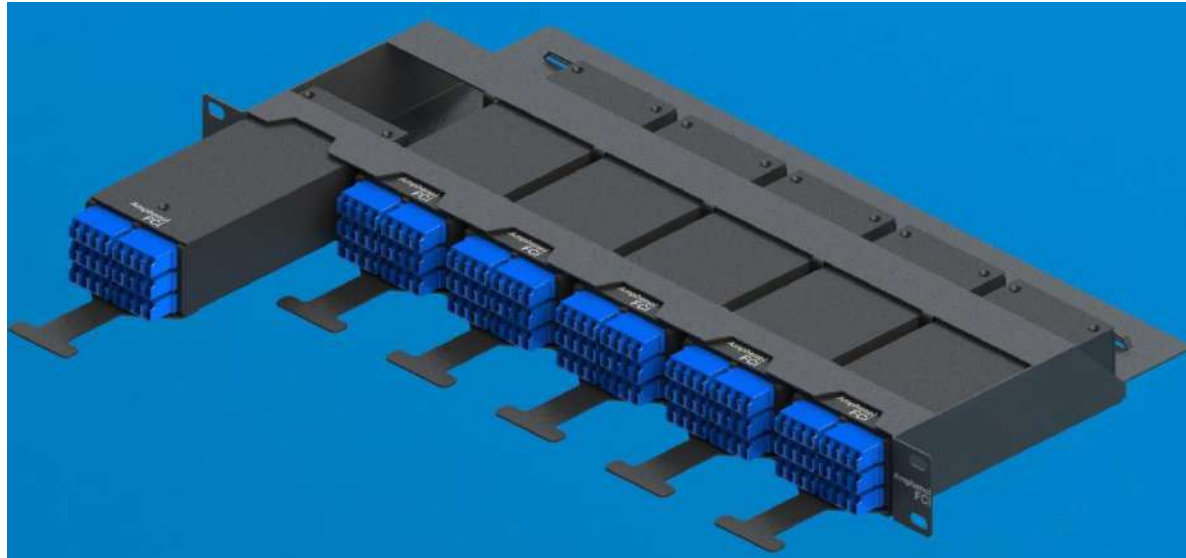
RACK MOUNT SOLUTIONS_DATA CENTER



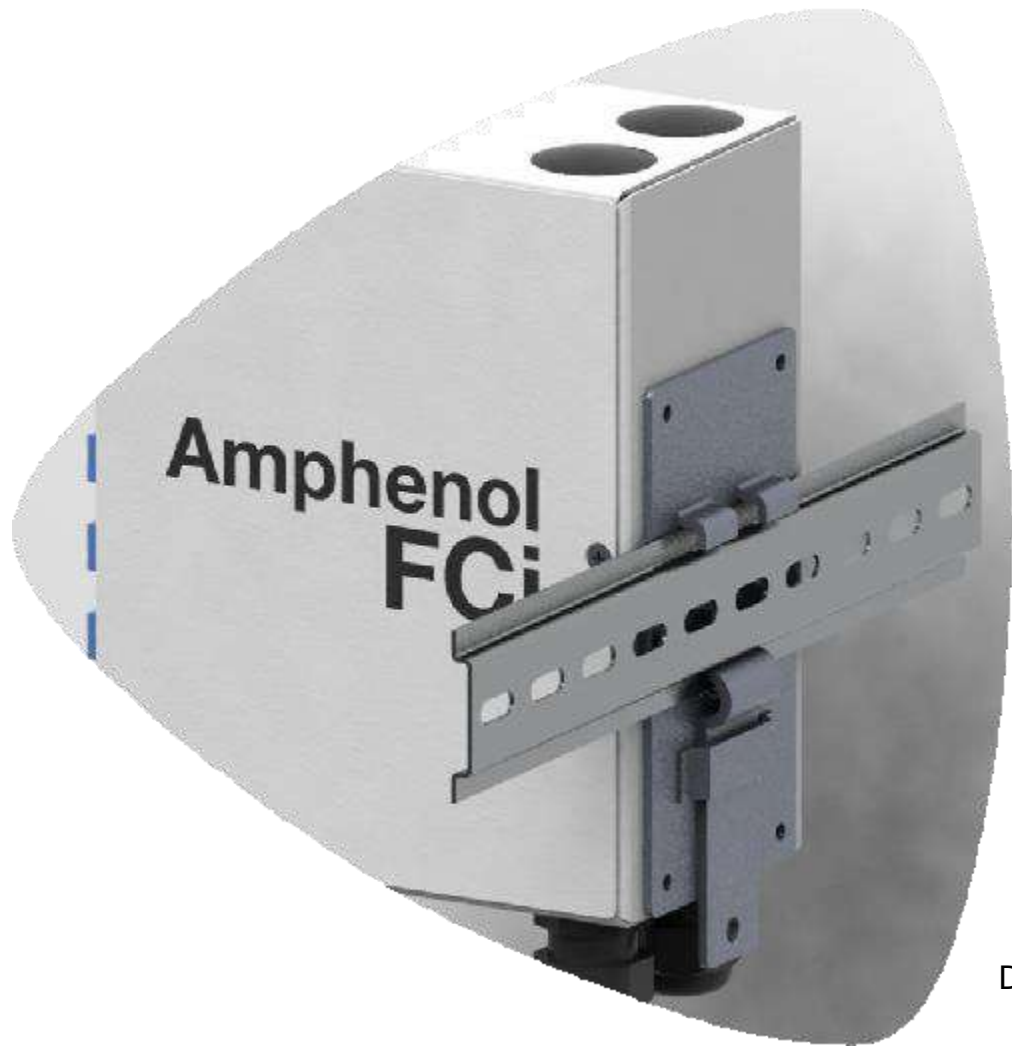
- RACK MOUNT-MPO/MTP PANELS
- TERMINATION
- SIZE: 1U



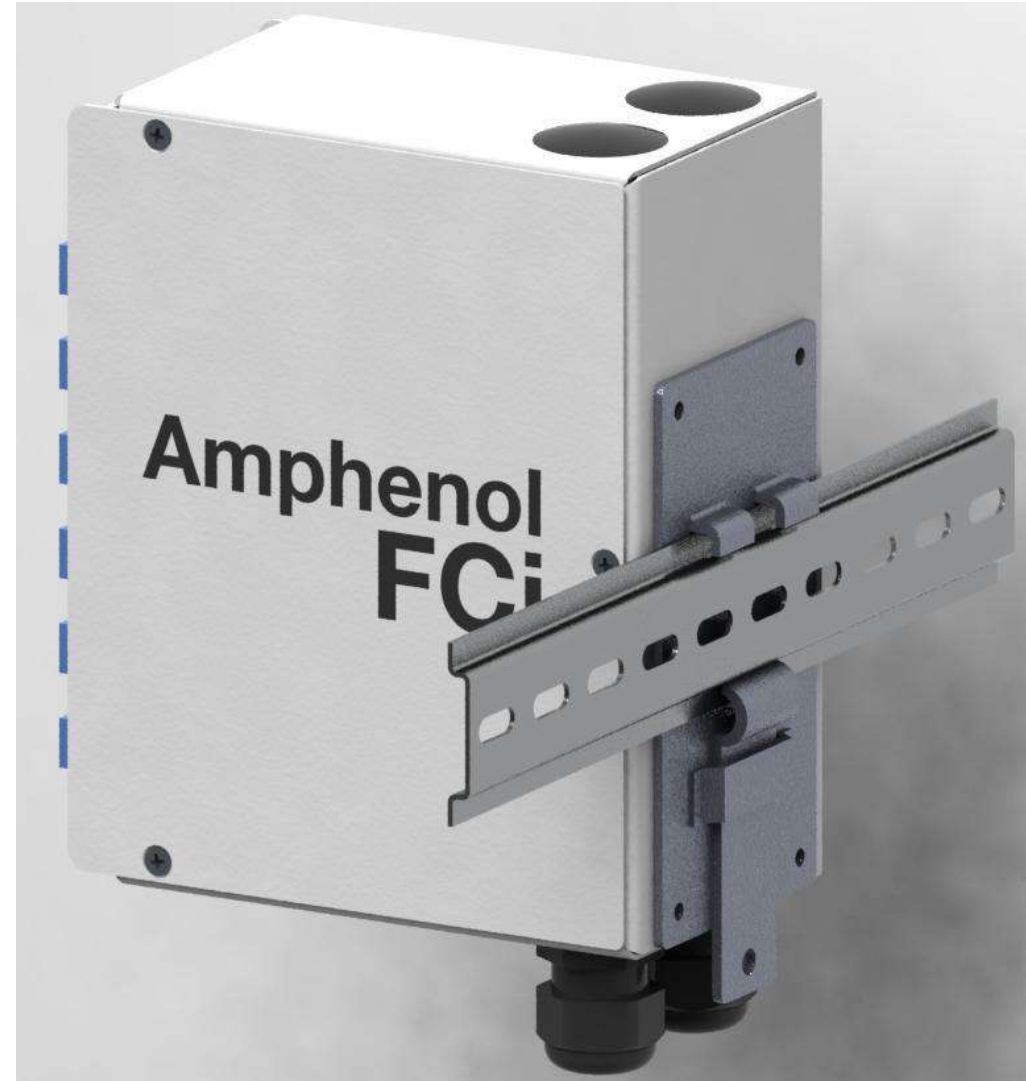
RACK MOUNT SOLUTIONS_DATA CENTER_HIGH DENSITY



- RACK MOUNT-MPO/MTP PANELS
- TERMINATION
- SIZE: 1U



DIN RAILMOUNT SOLUTIONS



- DIN RAIL MOUNT
- INDUSTRIAL/AUTOMATION/ROBOTIC APPLICATION

WALL/POLE MOUNT METALLIC FIBER

TERMINATION BOXES

WALL MOUNT FIBER TERMINATION BOX



- INDOOR/OUTDOOR
- CUSTOMIZED DESIGN TO SUIT THE CUSTOMER REQUIREMENT.
- WALL/POLE MOUNT
- SUPPORTS FROM 2F TO 288F CAPACITY





PEDESTAL MOUNT SOLUTIONS

PEDESTAL MOUNT SOLUTIONS_STREET CABINETS



NETWORKING SOLUTIONS

NETWORKING SOLUTIONS_NETWORK CABINETS/MULTIMEDIA BOXES







NETWORK RACKS

NETWORK RACKING SOLUTIONS_WALL MOUNT







OPTICAL DISTRIBUTION FRAMES

ODF-OPTICAL DISTRIBUTION FRAMES



SMART CITIES OUTDOOR NETWORKING

JUNCTION CABINETS_CUSTOMIZED

CUSTOMIZED OUTDOOR JUNCTION CABINETS FOR SMART CITIES



- FULLY OUTDOOR.
- CUSTOMIZED DESIGN TO SUIT THE CUSTOMER REQUIREMENT.



- FULLY OUTDOOR.
- CUSTOMIZED DESIGN TO SUIT THE CUSTOMER REQUIREMENT.
- WALL/POLE MOUNT
- CCTV /SOLAR BATTERY CABINETS



INDUSTRIAL IP RATED CABINETS

CUSTOMIZED INDUSTRIAL CABINETS



- INDOOR/OUTDOOR
- CUSTOMIZED SIZE.
- SCALABLE DESIGN
- AVAILABLE IN CRCA STEEL, STAINLESS STEEL, ALUMINIUM MATERIAL
- IP 55/65/66 RATED

FIBER OPTIC SPLICE CLOSURES

FIBER OPTIC SPLICE CLOSURES



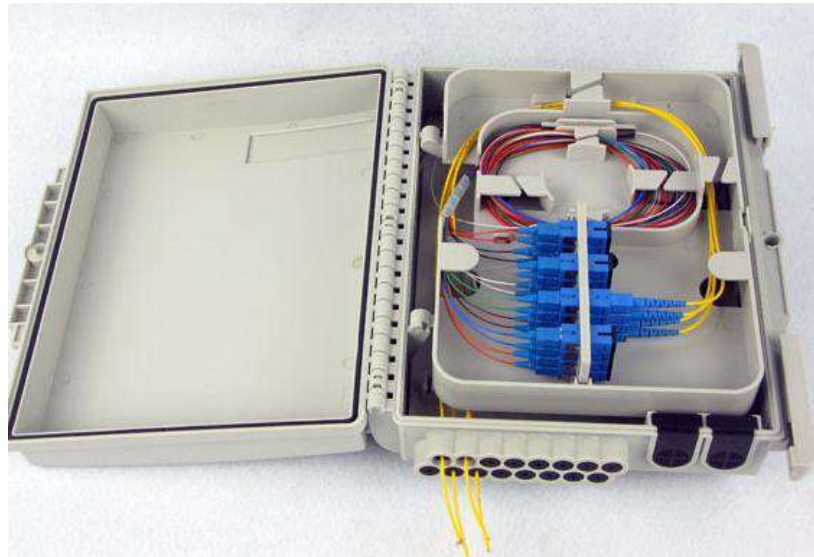
- OUTDOOR
- DOME/INLINE CLOSURES
- PLASTIC MOULDED
- IP66/68
- ARIAL/UNDERGROUND/WALL/POLE MOUNTABLE
- AVAILABLE FROM 12F TO 288F CAPACITY



FIBER OPTIC PLASTIC TERMINATION

BOXES

FIBER OPTIC PLASTIC TERMINATION BOXES

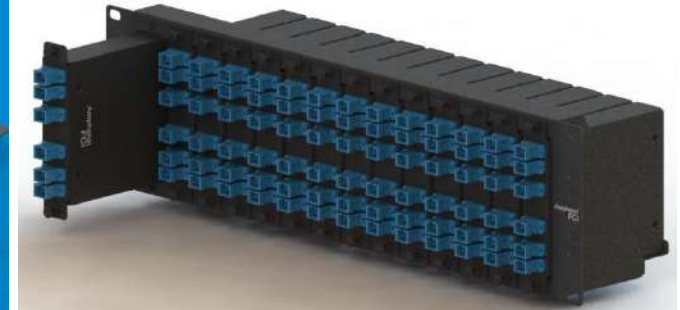


- OUTDOOR/OUTDOOR
- WALL/POLE
- PLASTIC MOULDED
- IP65
- AVAILABLE FROM 12F TO 288F CAPACITY



FIBER OPTIC SPLITTERS

FIBER OPTIC SPLITTERS



- 19" RACK MOUNT SPLITTER
- MODULAR SPLITTER
- MINI SPLITTER
- ABS MODULE SPLITTER
- LGX SPLITTER

